

---

**Mid-Year Population Estimates for Argyll and Bute**


---

**1.0 HEADLINES**

- 1.1 NRS (National Records of Scotland) published its Mid-Year Estimates for local authority and health board areas on 25 April 2019.
- 1.2 According to these statistics, the underlying trend continues to be of population decline in Argyll and Bute.

**2.0 RECOMMENDATIONS**

- 2.1 That the Community Planning Committee considers this report in relation to our vision that our economy is built on a growing population.

**3.0 DETAIL**

- 3.1 Table 1 below shows how Argyll and Bute's population has changed between 2014 and 2018.

**Table 1:**

Estimated population 30 June 2017	Births	Deaths	Natural change	Estimated net civilian migration	Other changes	Estimated population 30 June 2018	Population change	
							Number	%
<b>86,810</b>	655	1,133	-478	-80	8	<b>86,260</b>	-550	<b>-0.6</b>
June 2016						June 2017		
<b>87,130</b>	671	1,087	-416	137	-41	<b>86,810</b>	-320	<b>-0.4</b>
June 2015						June 2016		
<b>86,890</b>	702	1,093	-391	234	397	<b>87,130</b>	+ 240	<b>+ 0.3</b>
June 2014						June 2015		
<b>87,650</b>	711	1,160	-449	-233	-78	<b>86,890</b>	-760	<b>-0.9</b>

- 3.2 'Other' includes changes in the number of prisoners, asylum seekers, and armed forces personnel stationed in Scotland. In Argyll and Bute, this figure is dominated by changes at the Faslane base.
- 3.3 This table shows how the fluctuation of 'other changes' can influence the overall population figures for Argyll and Bute. However, it is the demographic figures (births, deaths and migration) that influence the long-term population trends. The pattern of demographic change continues to show an overall trend of population decline.

## Demographic profile of Argyll and Bute

- 3.4 The recent Mid-Year Estimates illustrate that Argyll and Bute is one of three local authorities with the highest proportion of people aged 65 and over. This group constitutes 25% of the population. Tables 3a to 3c provide a breakdown of the population by age group and sex.

**Table 3a: Estimated population by age group**

Age group	% of population
0 to 15	15.10%
16 to 24	9.71%
25 to 44	19.49%
45 to 64	30.25%
65 to 74	14.29%
75 and over	11.17%

**Table 3b: Estimated population by age group (working age)**

Age group	% of population
All ages	100
0 to 15	15.10%
16 to 64 (working age)	59.44%
65 and over (pensionable age)	25.46%

## How we compare by population

- 3.5 Argyll and Bute's population between 2017/18 saw the second highest percentage population decrease in Scotland (after Inverclyde). This is set out in Appendix 1. This is set out in Appendix 1.
- 3.6 Between 2013 and 2018 Argyll and Bute has had the third highest cut to our funding of all of Scotland's local authorities. (Appendix 2).
- 3.7 Although we do not have evidence of a direct correlation between funding and population, the scale of funding cut underlines the scale of challenge the council faces in reversing population decline and building a successful future for Argyll and Bute, the council with the second largest mainland area and the highest number of inhabited islands to serve.

## Best Value Audit considerations

- 3.8 The 'Vision and Leadership' theme of the Best Value Audit themes looks at links between vision, action and data.
- 3.9 This is an example of what is set out by Audit Scotland as vision and leadership working well:
- "the vision incorporates the council's improvement objectives; it is refreshed in line with emerging issues".

## Actions

- 3.10 Argyll and Bute Council invests considerably in creating opportunities for economic and population growth. Argyll and Bute's Community Planning Partnership works together to achieve growth for the area.
- 3.11 The fact that the trend is of population decline could be said to underline that we cannot achieve a sustainable future for Argyll and Bute on our own. This in turn serves as a reminder of the importance of support from other relevant agencies, for example through the Rural Growth Deal which aims to secure transformational investment for the area.

## 4.0 CONCLUSION

- 4.1 According to the Mid-2018 Population Estimates:
- The estimated population for Argyll and Bute on 30 January 2018 was **86,260**.
  - This is a net decrease of 550 people (-0.6%) over the 12 month period.
  - The underlying trend in Argyll and Bute continues to be of population decline.

## 5.0 IMPLICATIONS

5.1 Policy	No direct impact but population change may affect various areas of council policy
5.2 Financial	No direct impact from this report but the council's funding formula from Scottish Government is affected by population levels
5.3 Legal	None
5.4 HR	None
5.5 Equalities	None
5.6 Risk	The CPPI will not achieve our vision that 'Argyll and Bute's Economic Success is built on a Growing Population'.
5.7 Customer Service	None

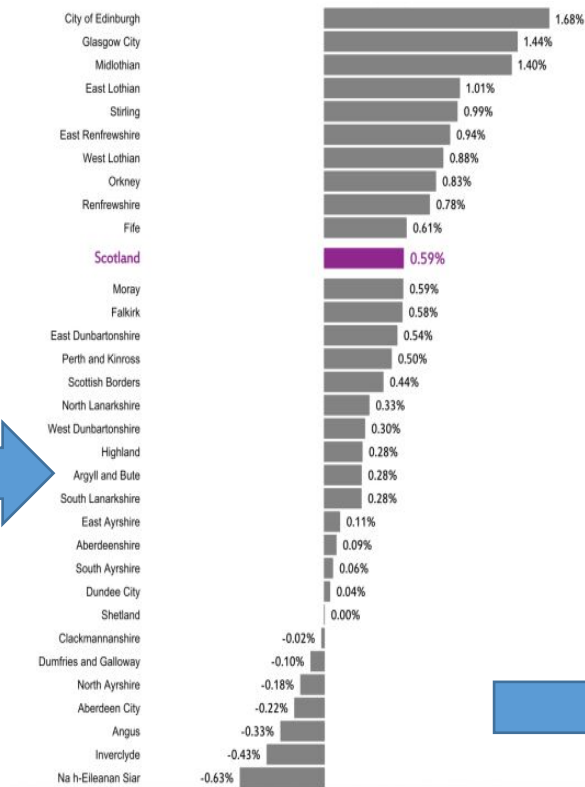
**Further information:** Jane Jarvie, Communications Manager; Genna Lague, Research and Engagement Officer - 01546 604323

Appendix 1: Population decline across Scotland's councils

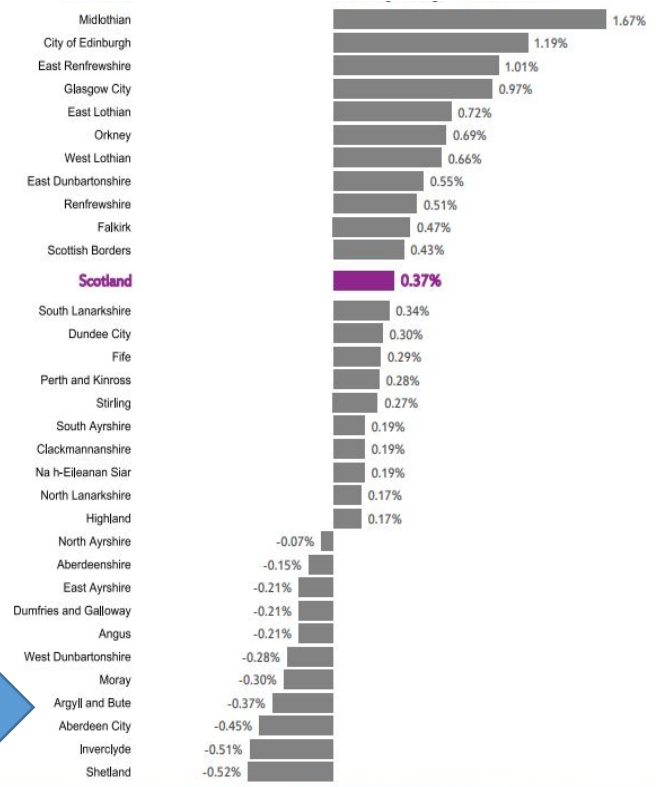
Appendix 2: Comparison of councils' funding cuts

# Appendix 1 – Population decline across Scotland’s councils

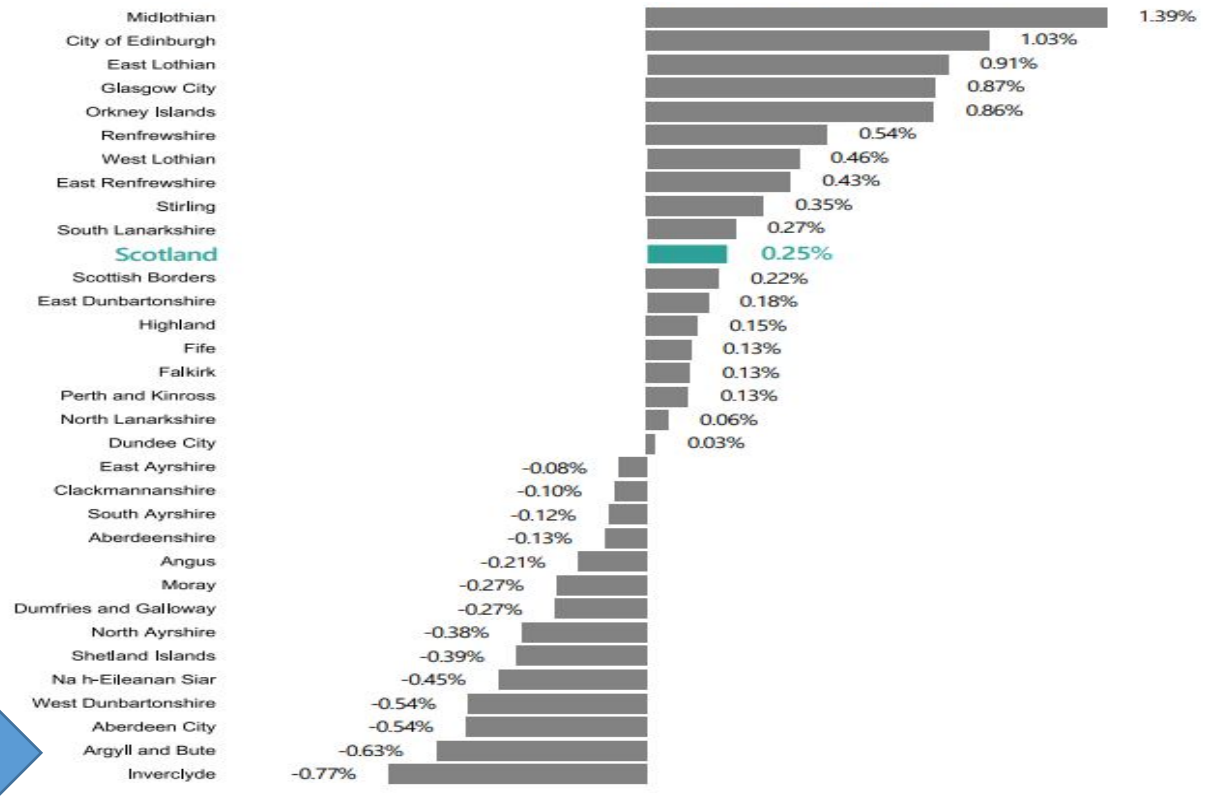
## Percentage change 2015 to 2016



## Percentage change 2016 to 2017

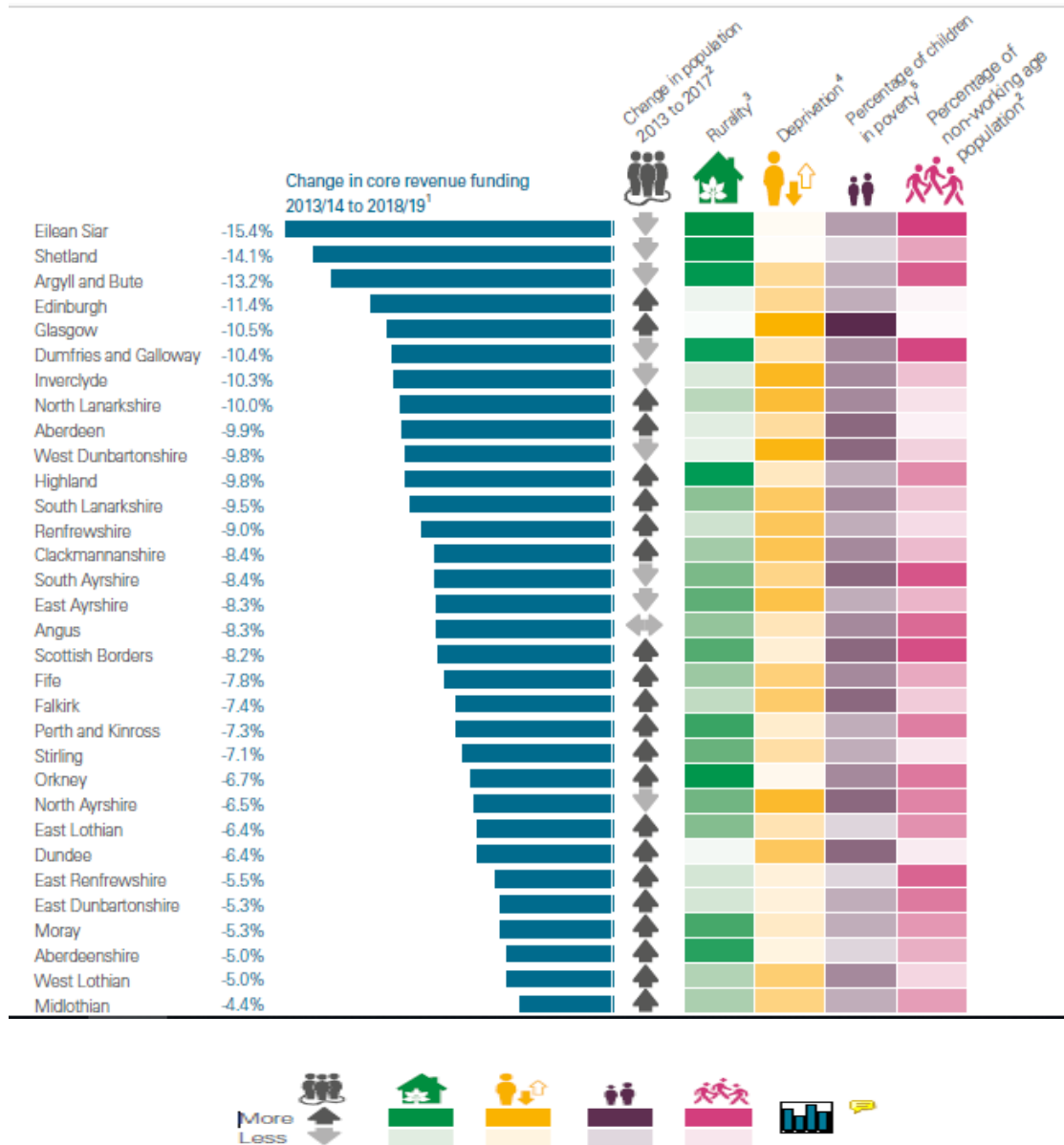


## Percentage change 2017 to 2018



## Appendix 2: Comparison of cuts to councils' funding

Over the past 5 years, Argyll and Bute Council has had the third largest cut to its funding of all of Scotland's councils. This is despite having the highest number of inhabited islands (23) and the second largest mainland area.



Note: The information above is taken from the Accounts Commission Report – [Local Government in Scotland, Challenges and Performance 2019](#).